



Features

- Frequency Range: 1~110MHz
- Gain: 20dB(Typical)
- 27dBm Typical 1dB Compression
- IP₃(out): 40dBm(Typical)
- Standard Hermetic Package
- Operating Temperature Range: -55°C ~ +85°C

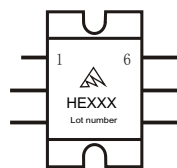
Specifications (50 Ω, V_{CC} = +15V, T_A = -55°C ~ +85°C)

Parameter	Symbol	Unit	Guaranteed	Typical
Frequency Range	f _L ~ f _H	MHz	3 ~ 50	1 ~ 110
Gain	G _p	dB	≥ 17.0	20.0
Gain Flatness	ΔG _p	dB	≤ 1.0 Δ	0.4
Noise Figure	F _n	dB	≤ 6.0 Δ	3.7
Input VSWR	VSWR _i	--	≤ 2.0:1 Δ	1.5:1
Output VSWR	VSWR _o	--	≤ 2.0:1 Δ	1.5:1
Output Power @ 1dB Compression	P ₋₁	dBm	≥ 27.0* Δ	27.5
DC Current	I _{CC}	mA	--	180

*f = 30MHz; "Δ" T_A = 24 ± 1°C;

Maximum Rating

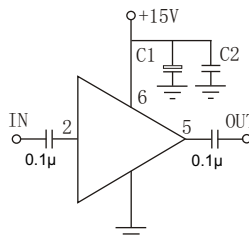
- DC Voltage : +20V_{DC}
- RF Input: +15dBm
- Storage Temp: +125°C



SP-1A

Application Notes

1. Typical application shown as right, C₁ = 22~47 μF ; C₂ = 1000~3300pF;
2. 30dBm output power can be offered (more than 18V_{DC});
3. See assembly section for mounting information
4. Connectorized package(SMA-3) available
5. Pay attention to heat dispersion.



Typical Curves

